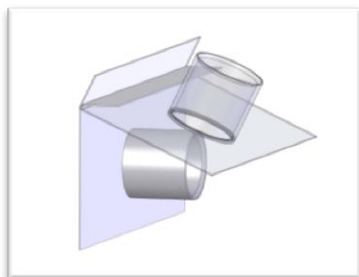




## Vision Pro Adaptor Installation



1. Open the Vision Pro door flap and insert the Vision Pro adaptor into the opening with the L shaped bend at the top and facing toward you.



**Note: Tilt The Vision Pro adaptor up as shown to set into place, then swing down to meet flush with the opening in the drawer.**



2. Place the fan into the adaptor until it is snug.



3. Allow the Vision Pro door flap to rest on the fan. The installation is complete.

Ash Cleanout Drawer shown removed from the cooker for clarity

